



The **Big** *at Express*
Ranches
Event

FRIDAY, AUGUST 18, 2017

1:00 p.m. 231 Fall-Calving Females

6:00 p.m. Pre-sale Gala/Country Music Spectacular
at the home of Bob Funk

SATURDAY, AUGUST 19, 2017

7:30 a.m. Coffee, Juice and Pastries

11:00 a.m. Big Event Sale - Live at Express Ranches 300+ Lots

BID LIVE BOTH DAYS: www.superiorlive.com & www.liveauctions.tv

SALE-DAY SUPPLEMENT

Welcome to Express Ranches & the Big Event Angus Sale

UPDATED 09.17.17 - a.m.

LOT	UPDATED INFORMATION	LOT	UPDATED INFORMATION
1	Bred to EXAR Exchange Rate 6256B 6/30/2017. Checked Safe	317	Sells Open.
17B	Bred to EXAR Exchange Rate 6256B on 5/31/2017. Checked Safe.	330	Sells Open.
73	Flushed 2 times for a total of 22 high quality embryos.	357	Bred to Curtin Resonate 5051 on 6/20/2017. Checked Safe.
93	Due after 09/01/2017 to EXAR Emblazon 3356B.	574	Flushed 4 times for a total of 30 high-quality embryos.
222	Bred to EXAR Exchange Rate 6256B on 6/01/2017. Checked Safe.	OUT OF SALE	
240	Bred to EXAR EZ Choice 6634B on 7/2/2017. Checked Safe.	9B, 58, 71, 85, 215, 226, 323A, 327, 327A, 510, 539, 576,	
251	Bred to EXAR Exchange Rate 6256B on 5/31/2017. Checked Safe.	583, 611, 616, 663, 677, 699, 712, 718	
307	Sells Open.		
313	Flushed 4 times for a total of 12 high-quality embryos.		

UPDATED WEANING WEIGHTS

LOT	ADJ. WW	LOT	ADJ. WW	LOT	ADJ. WW	LOT	ADJ. WW	LOT	ADJ. WW	LOT	ADJ. WW
2	713 LBS.	56B	673 LBS.	113	668 LBS.	144	588 LBS.	307A	734 LBS.	334A	741 LBS.
3	672 LBS.	57A	703 LBS.	114	641 LBS.	145	590 LBS.	308A	614 LBS.	335A	731 LBS.
4A	700 LBS.	57B	613 LBS.	115	670 LBS.	146	705 LBS.	309A	718 LBS.	336A	640 LBS.
4B	642 LBS.	59	671 LBS.	116	681 LBS.	147	638 LBS.	310A	781 LBS.	337A	809 LBS.
4C	626 LBS.	60	649 LBS.	121	735 LBS.	148	627 LBS.	311A	764 LBS.	338A	719 LBS.
5	696 LBS.	61	700 LBS.	122	642 LBS.	149	716 LBS.	312A	693 LBS.	339A	797 LBS.
6	655 LBS.	62	690 LBS.	123	664 LBS.	150	627 LBS.	313A	691 LBS.	340A	787 LBS.
8A	683 LBS.	63A	702 LBS.	124	630 LBS.	151	637 LBS.	314A	767 LBS.	341A	637 LBS.
8B	692 LBS.	63B	636 LBS.	126	782 LBS.	152	607 LBS.	315A	790 LBS.	342A	653 LBS.
11	641 LBS.	64	662 LBS.	128	716 LBS.	205	647 LBS.	316A	756 LBS.	343A	607 LBS.
42	736 LBS.	65	674 LBS.	129	727 LBS.	206	702 LBS.	317A	734 LBS.	344A	696 LBS.
43	644 LBS.	66	613 LBS.	130	606 LBS.	207	555 LBS.	318A	707 LBS.	345A	703 LBS.
44	777 LBS.	100	645 LBS.	131	671 LBS.	208	648 LBS.	319A	807 LBS.	346A	732 LBS.
45	640 LBS.	101	656 LBS.	132	612 LBS.	209	767 LBS.	320A	749 LBS.	347A	689 LBS.
46	614 LBS.	102	656 LBS.	133	617 LBS.	210A	722 LBS.	321A	765 LBS.	348A	628 LBS.
47	750 LBS.	103	558 LBS.	134	714 LBS.	210B	641 LBS.	322A	795 LBS.	349A	711 LBS.
48	671 LBS.	104	617 LBS.	135	677 LBS.	212	701 LBS.	324A	783 LBS.	350A	722 LBS.
49	617 LBS.	105	638 LBS.	136	581 LBS.	213	718 LBS.	325A	735 LBS.	351A	663 LBS.
50	628 LBS.	106	755 LBS.	137	604 LBS.	214	575 LBS.	326A	790 LBS.	352A	721 LBS.
51	678 LBS.	107	673 LBS.	138	597 LBS.	301A	820 LBS.	328A	737 LBS.	353A	605 LBS.
52	681 LBS.	108	634 LBS.	139	614 LBS.	302A	706 LBS.	329A	771 LBS.	354A	606 LBS.
53	773 LBS.	109	617 LBS.	140	662 LBS.	303A	784 LBS.	330A	674 LBS.	355A	660 LBS.
55A	730 LBS.	110	664 LBS.	141	587 LBS.	304A	725 LBS.	331A	610 LBS.	356A	699 LBS.
55B	715 LBS.	111	557 LBS.	142	602 LBS.	305A	687 LBS.	332A	684 LBS.	357A	641 LBS.
56A	646 LBS.	112	669 LBS.	143	557 LBS.	306A	715 LBS.	333A	741 LBS.	358A	627 LBS.

— UPDATED CALVING INFORMATION —

LOT	TATTOO	REG#	BIRTH DATE	SEX	SIRE'S NAME	ACT. BW	CED	BW	WW	MILK	YW	CW	MARB	REA	\$B
17	7267	18851920	8/9/17	C	Quaker Hill Rampage 0A36	75	11	1.4	70	25	120	53	0.45	1.04	151.76
18	7265	18848975	8/5/17	C	EXAR Stud 4658B	65	9	1.5	75	22	135	67	0.86	1.01	188.84
67	7236	18845761	7/17/17	C	EXAR Stud 4658B	76	9	1.2	63	25	117	53	0.85	0.60	168.90
69	7300B	18849436	8/4/17	B	EXAR Stud 4658B	74	3	2.4	74	19	128	64	0.93	0.70	183.86
75	7299B	18851655	8/3/17	B	G A R Sure Fire	67	17	-1.3	59	29	112	47	1.08	0.75	156.25
76	7264	18848974	8/2/17	C	EXAR Stud 4658B	59	12	0.5	60	21	110	49	0.80	0.62	149.31
78	7237	18849944	7/18/17	C	EXAR Spread 5767B	68	13	-0.6	59	29	110	46	0.68	0.83	148.66
81	7250	18845768	7/30/17	C	EXAR Stud 4658B	61	8	1.7	59	20	111	53	0.93	0.70	170.28
82	7266B	18845777	7/17/17	B	EXAR Stud 4658B	75	9	1.5	63	20	116	51	0.91	0.74	162.15
83	7272B	18848687	7/26/17	B	EXAR Stud 4658B	67	7	0.7	66	23	112	53	0.95	0.64	170.30
84	7903B	18851346	8/8/17	B	G A R Sure Fire	76	14	0.1	57	23	113	48	1.19	0.57	151.93
86	7270B	18845781	7/22/17	B	EXAR Stud 4658B	79	7	2.1	62	27	112	54	1.09	0.88	182.85

— UPDATED CALVING INFORMATION —

LOT	TATTOO	REG#	BIRTH DATE	SEX	SIRE'S NAME	ACT. BW	CED	BW	WW	MILK	YW	CW	MARB	REA	\$B
87	7245	18851648	7/23/17	C	G A R Sure Fire	64	12	0.6	64	18	113	42	1.21	0.81	157.19
89	7247	18845766	7/23/17	C	EXAR Stud 4658B	67	7	1.3	70	29	128	56	0.90	0.73	167.26
90	7267B	18845778	7/20/17	B	EXAR Stud 4658B	68	9	1.4	72	24	127	57	0.92	0.80	174.13
92	7246	18851654	7/26/17	C	G A R Sure Fire	60	9	1.6	67	27	115	50	1.20	0.57	153.91
117	7266	18848976	7/31/17	C	3F Epic 4631	68	8	1.3	74	21	130	51	0.80	0.45	155.92
<i>(Lot 117 - grafted single birth calf from Lot 85)</i>															
118	7273	18851343	8/11/17	C	PVF Insight 0129	87	4	3.0	60	22	100	42	0.06	0.97	120.78
120	7292B	18848977	7/30/17	B	EXAR Blue Chip 1877B	65	4	3.5	61	18	99	28	0.41	0.18	84.97
501	7297B	18851498	8/7/17	B	Quaker Hill Rampage 0A36	67	10	1.3	79	24	143	65	0.64	1.15	185.42
502	7907B	18851350	8/10/17	B	Quaker Hill Rampage 0A36	75	5	2.8	81	20	139	70	0.68	1.14	190.54
503	7181	18845745	8/2/17	C	EXAR Stud 4658B	60	11	0.7	58	24	102	48	0.84	0.65	149.81
504	7186B	18845750	7/21/17	B	EXAR Stud 4658B	77	11	0.2	60	23	106	45	0.96	0.75	153.24
505	7200B	18851167	7/21/17	B	EXAR Stud 4658B	75	13	-0.6	54	24	101	43	0.94	0.73	151.89
507	7166	18845731	7/17/17	C	EXAR Stud 4658B	68	13	0.1	60	26	105	42	0.83	0.68	146.43
511	7185	18851304	8/12/17	C	3F Epic 4631	71	14	0.2	70	29	133	56	0.59	0.63	161.01
512	7173	18845738	7/23/17	C	EXAR Stud 4658B	72	5	2.1	72	31	131	66	0.87	0.80	180.00
513	7164	18845729	7/15/17	C	EXAR Stud 4658B	78	10	0.3	58	31	102	46	0.74	0.81	150.15
514	7198B	18849444	8/6/17	B	EXAR Prophetic 5732B	69	8	1.8	62	31	108	49	1.00	0.76	147.39
515	7184	18848968	8/9/17	C	EXAR Spread 5767B	65	7	1.5	59	28	102	40	0.86	0.83	148.44
516	7175	18851650	7/24/17	C	G A R Sure Fire	67	9	1.7	64	28	116	50	0.99	0.66	167.57
519	7167	18845732	7/20/17	C	3F Epic 4631	75	12	-0.2	68	26	127	55	0.73	0.62	166.33
520	7183B	18845748	7/17/17	B	3F Epic 4631	76	15	-2.0	63	26	116	48	0.92	0.28	136.51
521	7172	18845737	7/23/17	C	EXAR Rapture 5844B	72	11	0.2	53	27	101	38	0.50	0.66	135.96
524	7197B	18845760	8/4/17	B	EXAR Stud 4658B	73	9	0.6	65	35	114	52	1.30	0.61	159.00
525	7185B	18845749	7/20/17	B	EXAR Resistol 3710B	78	9	1.2	61	22	109	53	0.74	0.86	159.84
527	7238	18845762	7/18/17	C	HA Cowboy Up 5405	65	9	1.1	69	16	127	53	0.45	0.54	158.33
528	7269	18851340	8/10/17	C	HA Cowboy Up 5405	60	10	1.5	70	16	130	51	0.32	0.68	152.75
531	7268B	18845779	7/21/17	B	EXAR Rapture 5844B	70	7	2.1	67	23	122	53	0.79	0.81	166.14
535	7905B	18851348	8/10/17	B	HA Cowboy Up 5405	80	9	1.3	66	22	120	49	0.26	0.88	145.09
544	7259	18848970	8/7/17	C	Quaker Hill Rampage 0A36	72	10	2.4	70	20	132	59	0.65	1.05	164.76
545	7269B	18845780	7/22/17	B	G A R Prophet K243	72	6	2.4	76	31	138	60	0.74	0.91	163.86
547	7263	18849437	8/6/17	C	EXAR Stud 4658B	60	10	0.6	54	25	99	49	0.93	0.53	154.14
550	7277B	18848701	7/28/17	B	EXAR Stud 4658B	82	9	1.2	51	29	100	42	0.91	0.60	142.11
551	7274B	18848709	7/27/17	B	HA Cowboy Up 5405	81	7	1.8	70	16	120	50	0.23	0.47	139.86
552	7272	18852489	8/10/17	C	HA Cowboy Up 5405	58	5	2.1	61	18	106	45	0.31	0.60	138.93
554	7289B	18849336	7/29/17	B	Quaker Hill Rampage 0A36	75	10	1.5	67	22	111	50	0.44	1.05	153.30
557	7274	18851344	8/12/17	C	EXAR Stetson 3704B	68	11	-0.2	55	34	101	35	0.67	0.53	114.87
558	7280B	18850289	7/30/17	B	Quaker Hill Rampage 0A36	86	10	1.9	71	22	117	48	0.68	0.82	154.67
559	7239	18848282	7/16/17	C	EXAR Rapture 5844B	67	9	1.0	61	25	111	45	0.69	0.71	148.26
560	7252	18849338	7/29/17	C	Quaker Hill Rampage 0A36	82	4	3.5	73	22	127	55	0.51	0.92	156.42
562	7253	18845769	7/28/17	C	G A R Prophet K243	68	5	2.2	69	28	120	42	0.89	0.79	140.25
563	7906B	18851349	8/10/17	B	3F Epic 4631	76	10	-0.1	59	20	103	35	0.84	0.48	122.82
567	7265B	18845776	7/16/17	B	HA Cowboy Up 5405	83	7	2.5	69	21	119	49	0.38	0.69	151.15
569	7275	18851345	8/14/17	C	EXAR Rapture 5844B	67	7	1.5	66	27	119	52	0.74	0.82	162.58
579	7190B	18845754	7/28/17	B	EXAR Resistol 3710B	69	10	1.9	69	23	125	62	0.37	0.90	160.43
580	7186	18852594	8/15/17	C	EXAR Stetson 3704B	70	7	1.2	63	29	112	42	0.48	0.92	130.02
581	7183	18848967	8/7/17	C	3F Epic 4631	65	11	0.2	67	25	121	48	0.45	0.63	141.79
582	7171	18845736	7/22/17	C	EXAR Stetson 3704B	77	9	1.9	61	27	107	38	0.52	0.71	126.43

— UPDATED CALVING INFORMATION —

LOT	TATTOO	REG#	BIRTH DATE	SEX	SIRE'S NAME	ACT. BW	CED	BW	WW	MILK	YW	CW	MARB	REA	\$B
584	7174	18845739	7/23/17	C	3F Epic 4631	67	10	0.6	67	22	118	45	0.31	0.51	122.96
585	7179	18845743	8/1/17	C	3F Epic 4631	67	4	2.6	80	22	139	53	0.54	0.39	148.80
587	7271	18851342	8/10/17	C	EXAR Stetson 3704B	68	11	1.2	57	25	101	29	0.65	0.44	112.26
588	7279B	18845786	8/1/17	B	EXAR Blue Chip 1877B	89	2	3.7	59	26	92	27	0.33	0.34	90.85
589	7910B	18851353	8/10/17	B	EXAR Stud 4658B	91	6	2.1	57	21	101	44	0.84	0.39	141.65
590	7271B	18845782	7/21/17	B	EXAR Blue Chip 1877B	83	6	2.6	61	23	99	36	0.59	0.48	114.26
591	7912B	18851355	8/11/17	B	HA Cowboy Up 5405	70	9	1.8	66	9	114	41	0.44	0.53	136.36
594	7263B	18845774	7/14/17	B	HA Cowboy Up 5405	78	9	1.6	76	13	137	56	0.41	0.64	163.41
596	7294B	18848979	8/6/17	B	3F Epic 4631	74	9	0.3	66	20	119	45	0.74	0.52	144.02
597	7199B	18851656	8/6/17	B	G A R Sure Fire	59	10	1.2	59	23	109	46	1.23	0.86	159.32
600	7275B	18845784	7/28/17	B	G A R Prophet K243	86	10	1.3	68	34	121	46	0.95	0.78	152.21
601	7914B	18851356	8/14/17	B	HA Cowboy Up 5405	82	8	1.3	65	16	124	47	0.42	0.51	144.65
603	7243	18848705	7/22/17	C	EXAR Avatar 5516B	67	8	1.7	57	24	102	40	0.56	0.62	136.95
605	7262	18848973	8/6/17	C	EXAR Stetson 3704B	70	9	1.6	68	26	116	38	0.33	0.53	103.40
608	7291B	18845793	8/2/17	B	EXAR Stetson 3704B	70	8	2.1	67	26	119	48	0.63	0.73	142.48
609	7295B	18848980	8/4/17	B	3F Epic 4631	78	10	1.1	76	23	132	60	0.60	0.55	159.02
610	7244	18845765	7/24/17	C	EXAR Rapture 5844B	67	8	1.7	65	24	120	54	0.83	1.11	184.14
615	7909B	18851352	8/10/17	B	HA Cowboy Up 5405	80	7	0.8	64	20	113	47	0.28	0.56	146.81
619	7240	18845763	7/21/17	C	HA Cowboy Up 5405	78	5	2.2	63	13	109	42	0.28	0.52	133.11
620	7264B	18845775	7/15/17	B	G A R Prophet K243	87	3	3.1	75	33	135	57	0.75	0.92	157.96
622	7288B	18845791	7/27/17	B	HA Cowboy Up 5405	72	9	1.3	67	16	123	56	0.14	0.71	154.84
623	7270	18851341	8/9/17	C	HA Cowboy Up 5405	67	8	1.0	62	16	111	42	0.16	0.73	131.68
626	7273B	18845783	7/26/17	B	HA Cowboy Up 5405	75	8	1.4	61	12	115	45	0.17	0.44	140.54
632	7286B	18845789	8/2/17	B	EXAR Stetson 3704B	57	6	2.2	60	23	106	37	0.45	0.48	112.55
634	7293B	18848978	8/6/17	B	EXAR Stetson 3704B	78	10	1.2	55	25	98	30	0.45	0.69	110.79
635	7258	18847474	8/2/17	C	EXAR Stetson 3704B	62	7	1.6	57	26	102	36	0.51	0.57	118.32
636	7255	18845771	7/30/17	C	EXAR Stetson 3704B	61	8	2.2	65	24	113	40	0.67	0.59	131.31
637	7298B	18848981	8/4/17	B	EXAR Stetson 3704B	72	8	0.7	57	25	101	37	0.51	0.66	114.75
639	7195B	18845759	8/2/17	B	EXAR Stetson 3704B	77	10	0.8	58	21	107	37	0.31	0.77	114.28
640	7170	18845735	7/22/17	C	EXAR Stetson 3704B	76	9	1.3	64	29	109	34	0.51	0.64	107.76
641	7168	18845733	7/20/17	C	EXAR Resistol 3710B	75	12	0.4	51	33	94	43	0.73	0.76	132.28
642	7196B	18848969	8/4/17	B	3F Epic 4631	70	N/A	N/A	N/A	N/A	N/A	N/A	N/A	N/A	N/A
643	7187B	18845751	7/22/17	B	EXAR Resistol 3710B	72	12	0.8	57	24	101	38	0.46	0.85	121.22
644	7165	18845730	7/15/17	C	3F Epic 4631	75	14	-0.7	71	24	127	49	0.57	0.40	135.10
645	7193B	18845757	7/31/17	B	3F Epic 4631	75	13	-0.8	63	27	118	38	0.76	0.30	125.32
646	7180	18845744	8/2/17	C	EXAR Spread 5767B	65	11	-0.3	60	25	102	35	0.71	0.64	131.17
647	7169	18845734	7/21/17	C	EXAR Stud 4658B	78	11	-0.3	60	24	109	42	0.85	0.44	144.37
648	7176	18845740	7/26/17	C	EXAR Stud 4658B	53	10	0.2	70	29	130	56	1.06	0.70	170.79
649	7189B	18845753	7/25/17	B	3F Epic 4631	71	12	-0.6	64	24	116	42	0.79	0.41	137.09
650	7191B	18845755	7/30/17	B	3F Epic 4631	71	9	0.7	70	21	131	52	0.56	0.47	147.78
651	7268	18852490	8/9/17	C	Quaker Hill Rampage 0A36	80	7	2.5	65	20	108	46	0.68	0.79	153.64
652	7251	18848708	7/29/17	C	EXAR Rapture 5844B	82	10	1.3	63	32	112	49	0.68	0.80	152.40
653	7296B	18848963	8/4/17	B	Quaker Hill Rampage 0A36	80	8	1.2	61	17	103	35	0.60	0.77	127.25
657	7276B	18848707	7/29/17	B	EXAR Rapture 5844B	91	10	1.1	59	28	106	44	0.61	0.75	147.79
659	7261	18848972	8/7/17	C	EXAR Stetson 3704B	63	9	1.3	61	23	111	42	0.60	0.64	132.38
662	7911B	18851354	8/12/17	B	EXAR Stetson 3704B	82	7	2.4	69	27	120	43	0.43	0.63	125.64
664	7915B	18852596	8/15/17	B	HA Cowboy Up 5405	83	9	1.3	65	19	119	51	0.28	0.59	146.74
674	7248	18848706	7/25/17	C	EXAR Spread 5767B	67	8	1.2	62	20	115	43	0.65	0.78	149.87
679	7241	18845764	7/22/17	C	HA Cowboy Up 5405	68	8	0.3	65	23	112	53	0.42	0.64	155.90

— **UPDATED CALVING INFORMATION** —

LOT	TATTOO	REG#	BIRTH DATE	SEX	SIRE'S NAME	ACT. BW	CED	BW	WW	MILK	YW	CW	MARB	REA	\$B
681	7249	18845767	7/25/17	C	HA Cowboy Up 5405	67	8	1.9	70	26	124	62	0.27	0.92	166.49
683	7276	18852595	8/14/17	C	EXAR Stetson 3704B	65	12	-0.1	53	28	97	27	0.56	0.63	96.29
685	7287B	18845790	8/2/17	B	HA Cowboy Up 5405	63	6	1.9	65	21	119	53	0.22	0.55	149.21
687	7260	18848971	8/7/17	C	EXAR Stetson 3704B	69	8	1.3	51	20	91	24	0.42	0.49	86.93
689	7913B	18852488	8/13/17	B	3F Epic 4631	73	12	0.8	74	21	136	65	0.50	0.62	165.98
693	7904B	18851347	8/8/17	B	3F Epic 4631	72	11	0.0	69	20	128	48	0.57	0.45	142.41
694	7908B	18851351	8/10/17	B	EXAR Stetson 3704B	49	9	1.0	56	25	96	26	0.43	0.60	91.65
696	7277	18853607	8/16/17	C	HA Cowboy Up 5405	67	6	2.2	72	19	127	55	0.35	0.49	160.35
701	7278B	18845785	8/2/17	B	EXAR Stetson 3704B	81	8	1.9	60	26	104	36	0.35	0.68	115.94
702	7254	18845770	7/31/17	C	G A R Prophet K243	68	8	2.0	62	28	111	38	0.93	0.68	123.09
713	7242	18848285	7/16/17	C	EXAR Avatar 5516B	69	4	2.2	56	23	106	42	0.46	0.54	137.45
728	7290B	18845792	8/3/17	B	HA Cowboy Up 5405	80	5	2.2	66	9	121	54	0.07	0.64	140.65



Upcoming EX Sales

Plan to join us for these events.

OCTOBER 2, 2017 ... EX Fall Bull Sale	MARCH 2018 ... EX Honor Roll Sale March
OCTOBER 15, 2017 ... EX Hereford Event	MARCH 2018 ... EX New Mexico Bull Sale, Newkirk, NM
MARCH 2018 ... EX Spring Bull Sale	APRIL 2018 ... EX Grass Time Sale

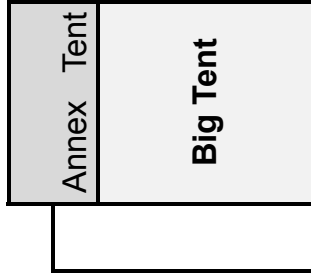
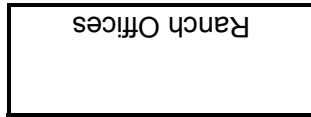
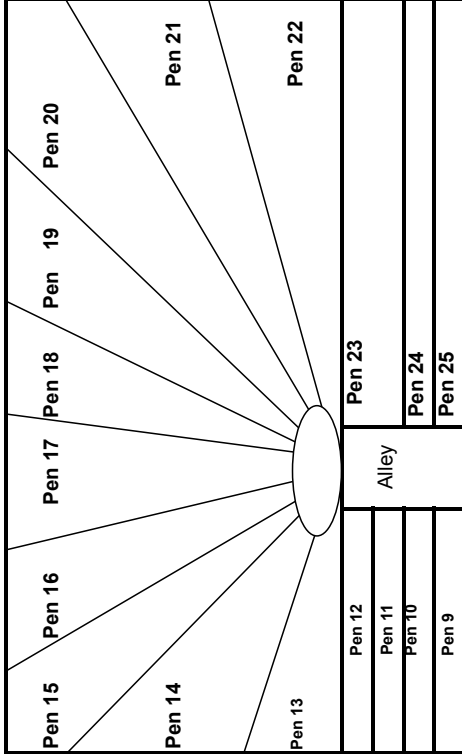
— LOT FINDER —

LOT	LOCATION	LOT	LOCATION	LOT	LOCATION	LOT	LOCATION	LOT	LOCATION	LOT	LOCATION	LOT	LOCATION	LOT	LOCATION	LOT	LOCATION		
1	BGT	41	BGT	97	Run 8	152	SB	252B	Run 7	329A	Pen 14	357A	Pen 16	556	Pen 35	615	HL 1	672	HL 3
2	BGT	42	ANX	98	BGT	201	D1	253	Run 7	330	Pen 14	358	Pen 16	557	Pen 35	617	HL 1	673	HL 3
3	BGT	43	ANX	99A	Run 8	202	D9	201	Pen 9	330A	Pen 14	358A	Pen 16	558	Pen 35	618	HL 1	674	HL 3
4A	ANX	44	ANX	99B	Run 8	203	D9	301A	Pen 9	331	Pen 14	501	Pen 25	559	Pen 35	619	HL 1	675	HL 3
4B	D4	45	ANX	100	SB	204	D1	302	Pen 9	331A	Pen 14	502	Pen 25	560	Pen 35	620	HL 1	676	HL 3
4C	ANX	46	ANX	101	SB	205	ANX	302A	Pen 9	332	Pen 14	503	Pen 26	561	Pen 35	621	HL 1	678	HL 3
5	D4	47	D4	102	SB	206	ANX	303	Pen 9	332A	Pen 14	504	Pen 26	562	Pen 35	622	HL 1	679	HL 3
6	BGT	48	ANX	103	SB	207	Run 5	303A	Pen 9	333	Pen 14	505	Pen 26	563	Pen 35	623	HL 1	680	HL 3
7	BGT	49	ANX	104	SB	208	ANX	304	Pen 9	333A	Pen 14	506	Pen 26	564	Pen 35	624	HL 1	681	HL 3
8A	ANX	50	Run 5	105	SB	209	D4	304A	Pen 9	334	Pen 14	507	Pen 26	565	Pen 32	625	HL 2	682	HL 3
8B	ANX	51	ANX	106	SB	210A	ANX	305	Pen 10	334A	Pen 14	508	Pen 26	566	Pen 32	626	HL 2	683	HL 3
9	Run 1	52	Run 5	107	SB	210B	ANX	305A	Pen 10	335	Pen 14	509	Pen 26	567	Pen 32	627	HL 2	684	HL 3
10A	BGT	53	Run 5	108	SB	211A	Run 8	306	Pen 10	335A	Pen 14	511	Pen 27	568	Pen 32	628	HL 2	685	HL 3
10B	BGT	55A	ANX	109	SB	211B	Run 8	306A	Pen 10	336	Pen 14	512	Pen 27	569	Pen 32	629	HL 2	686	HL 3
10C	BGT	55B	ANX	110	SB	212	D4	307	Pen 10	336A	Pen 14	513	Pen 27	570	Pen 32	630	HL 2	687	HL 3
11	D4	56A	ANX	111	SB	213	ANX	307A	Pen 10	337	Pen 15	514	Pen 27	571	Pen 32	631	HL 2	688	HL 3
12A	BGT	56B	ANX	112	SB	214	Run 5	308	Pen 10	337A	Pen 15	515	Pen 27	572	D11	632	HL 2	689	HL 3
12B	BGT	57A	Run 5	113	SB	215	Run 2	308A	Pen 10	338	Pen 15	516	Pen 27	573	D11	633	HL 2	690	HL 3
13	D5	57B	Run 5	113	SB	216	Run 2	309	Pen 11	338A	Pen 15	517	Pen 27	574	D11	634	HL 2	691	HL 3
14	D5	59	Run 5	114	SB	217	Run 2	309A	Pen 11	339	Pen 15	518	Pen 27	575	D11	635	HL 2	692	HL 3
15	D5	60	Run 5	115	SB	218	Run 2	310	Pen 11	339A	Pen 15	519	Pen 28	577	D11	636	HL 2	693	HL 3
16	D5	61	Run 5	116	SB	219	Run 2	310A	Pen 11	340	Pen 15	520	Pen 28	578	D11	637	HL 2	694	HL 3
17	D1	62	BGT	117	D10	220	Run 2	311	Pen 11	340A	Pen 15	521	Pen 28	579	D12	638	HL 2	695	HL 3
17A	D1	63A	Run 5	118	D10	221	Run 2	311A	Pen 11	341	Pen 15	522	Pen 28	580	D12	639	Pen 36	696	PVT
17B	D1	63B	Run 5	119	D10	222	Run 2	312	Pen 12	341A	Pen 15	523	Pen 28	581	D12	640	Pen 36	697	PVT
18	D2	64	ANX	120	D10	223	Run 2	312A	Pen 12	342	Pen 15	524	Pen 28	582	D12	641	Pen 36	698	PVT
19	D2	65	Run 5	121	SB	224	Run 2	313	Pen 12	342A	Pen 15	525	Pen 28	584	D12	642	Pen 36	700	PVT
22	D1	66	Run 5	122	SB	225A	BGT	313A	Pen 12	343	Pen 15	526	Pen 28	585	D12	643	Pen 36	701	PVT
22B	D1	67	D2	123	SB	225B	BGT	314	Pen 12	343A	Pen 15	527	Pen 29	586	Pen 36	644	Pen 36	702	PVT
22C	D1	68	D2	124	SB	226	Run 3	314A	Pen 12	344	Pen 15	528	Pen 29	587	Pen 36	645	Pen 36	703	PVT
22D	D1	69	D7	125	SB	227	Run 3	315	Pen 12	344A	Pen 15	529	Pen 29	588	Pen 36	646	Pen 36	704	PVT
23	D1	70	BGT	126	SB	228	Run 3	315A	Pen 12	345	Pen 15	530	Pen 29	589	Pen 36	647	Pen 36	705	PVT
24	Run 6	72	D9	127	SB	229	Run 3	316	Pen 13	345A	Pen 15	531	Pen 29	590	Pen 36	648	Pen 36	706	PVT
25A	Run 8	73	D9	128	SB	230	Run 3	316A	Pen 13	346	Pen 15	532	Pen 29	591	Pen 36	649	Pen 36	707	PVT
25B	Run 8	74	D2	129	SB	231	Run 3	317	Pen 13	346A	Pen 15	533	Pen 29	592	Pen 36	650	Pen 36	708	PVT
26	Run 1	75	D2	130	SB	232	Run 3	317A	Pen 13	347	Pen 16	534	Pen 29	593	HL 1	651	HL 2	709	PVT
27	BGT	76	D7	131	SB	233	Run 3	318	Pen 13	347A	Pen 16	535	Pen 29	594	HL 1	652	HL 2	710	PVT
28	BGT	77	D8	132	SB	234	Run 3	318A	Pen 13	348	Pen 16	536	Pen 30	595	HL 1	653	HL 2	711	PVT
29	D3	78	D2	134	SB	235	Run 3	319	Pen 13	348A	Pen 16	537	Pen 30	596	HL 1	654	HL 2	713	PVT
30	Run 8	79	D2	135	SB	236	Run 6	319A	Pen 13	349	Pen 16	538	Pen 30	597	Pen 36	655	HL 2	714	PVT
31	Run 8	80	D7	136	SB	237	Run 6	320	Pen 13	349A	Pen 16	540	Pen 30	598	HL 1	656	HL 2	715	PVT
32A	Run 1	81	D7	137	SB	238	Run 6	320A	Pen 13	350	Pen 16	541	Pen 30	599	Pen 36	657	HL 2	716	PVT
32B	Run 1	82	D7	138	SB	239	Run 6	321	Pen 13	350A	Pen 16	542	Pen 30	600	HL 1	658	HL 2	717	PVT
32C	Run 1	83	D7	139	SB	240	Run 6	321A	Pen 13	351	Pen 16	543	Pen 30	601	HL 1	659	HL 2	719	PVT
33A	Run 1	84	D7	140	SB	241	Run 6	322	Pen 13	351A	Pen 16	544	Pen 31	602	HL 1	660	HL 2	720	PVT
33B	Run 1	86	D8	141	SB	242	Run 6	322A	Pen 13	352	Pen 16	545	Pen 31	603	HL 1	661	HL 2	721	PVT
34	BGT	87	D8	142	SB	243	Run 6	323	Pen 13	352A	Pen 16	546	Pen 31	604	HL 1	662	HL 2	722	PVT
35	D3	88	D8	143	SB	244	Run 6	324	Pen 13	353	Pen 16	547	Pen 31	605	HL 1	663	HL 2	723	PVT
36	D3	89	D2	144	SB	245	Run 6	324A	Pen 13	353A	Pen 16	548	Pen 31	606	HL 1	664	HL 2	724	PVT
37	D3	90	D2	145	SB	246	Run 7	325	Pen 13	354	Pen 16	549	Pen 31	607	HL 1	665	HL 3	725	PVT
38	D3	91	D8	146	SB	247	Run 7	325A	Pen 13	354A	Pen 16	550	Pen 31	608	HL 1	666	HL 3	726	PVT
38A	Run 1	92	D8	147	SB	248	Run 7	326	Pen 14	355	Pen 16	551	Pen 35	609	HL 1	667	HL 3	727	PVT
38B	Run 1	93	D8	148	SB	249	Run 7	326A	Pen 14	355A	Pen 16	552	Pen 35	610	HL 1	668	HL 3	728	PVT
39	Run 1	94	Run 8	149	SB	250	Run 7	328	Pen 14	356	Pen 16	553	Pen 35	612	HL 1	669	HL 3	729	PVT
40A	Run 1	95	Run 8	150	SB	251	Run 7	328A	Pen 14	356A	Pen 16	554	Pen 35	613	HL 1	670	HL 3	730	PVT
40B	Run 1	96	Run 8	151	SB	252A	Run 7	329	Pen 14	357	Pen 16	555	Pen 35	614	HL 1	671	HL 3	731	PVT

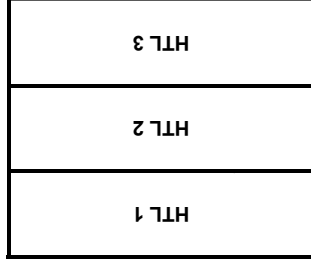
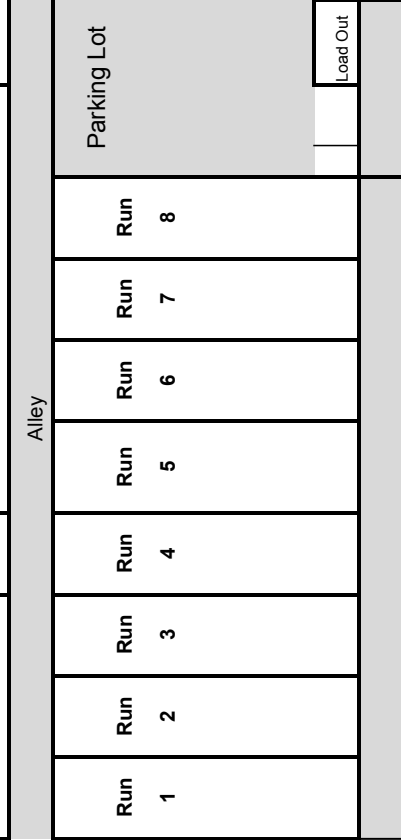
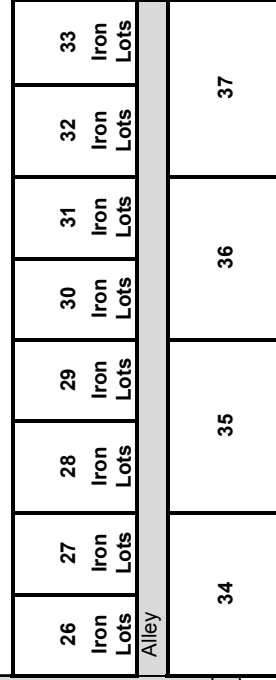
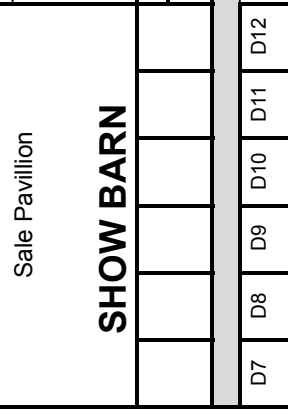
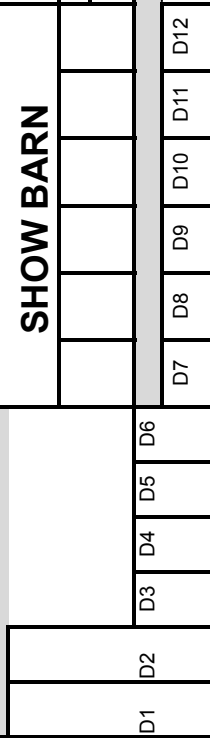


405.350.0044

www.expressranches.com



Main Entrance



Legend

- ANX = Annex Tent
- BGT = Big Tent
- PVT = Pivot Pen
- SB = Show Barn

— SALE ORDER —

FRIDAY, AUGUST 18 • SELL IN NUMERICAL ORDER • LOTS 501-731

SATURDAY, AUGUST 19 • SALE ORDER BELOW

LOT	LOCATION	LOT	LOCATION	LOT	LOCATION	LOT	LOCATION	LOT	LOCATION
1	TENT	225A	TENT	100	SHOW BARN	117	D10	98	TENT
1A	PREG	225B	TENT	105	SHOW BARN	118	D10	27	TENT
2	TENT	64	ANNEX	123	SHOW BARN	119	D10	28	TENT
13	D5	51	ANNEX	127	SHOW BARN	120	D10	34	TENT
14	D5	208	ANNEX	151	SHOW BARN	216	RUN 2	41	TENT
16	D5	210A	ANNEX	115	SHOW BARN	217	RUN 2	25A	RUN 8
15	D5	210B	ANNEX	126	SHOW BARN	218	RUN 2	25B	RUN 8
212	D4	206	ANNEX	113	SHOW BARN	219	RUN 2	30	RUN 8
209	D4	205	ANNEX	114	SHOW BARN	220	RUN 2	31	RUN 8
12A	TENT	213	ANNEX	121	SHOW BARN	221	RUN 2	94	RUN 8
12B	TENT	55A	ANNEX	104	SHOW BARN	222	RUN 2	95	RUN 8
47	D4	55B	ANNEX	116	SHOW BARN	223	RUN 2	96	RUN 8
11	D4	56A	ANNEX	107	SHOW BARN	224	RUN 2	97	RUN 8
4B	D4	56B	ANNEX	110	SHOW BARN	227	RUN 3	99A	RUN 8
5	D4	4A	ANNEX	101	SHOW BARN	228	RUN 3	99B	RUN 8
10A	TENT	4C	ANNEX	137	SHOW BARN	229	RUN 3	211A	RUN 8
10B	TENT	8B	ANNEX	139	SHOW BARN	230	RUN 3	211B	RUN 8
10C	TENT	40A	RUN 1	152	SHOW BARN	231	RUN 3		
62	TENT	38A	RUN 1	150	SHOW BARN	232	RUN 3		
37	D3	38B	RUN 1	103	SHOW BARN	233	RUN 3		
36	D3	9	RUN 1	111	SHOW BARN	234	RUN 3		
35	D3	39	RUN 1	112	SHOW BARN	235	RUN 3		
29	D3	33A	RUN 1	133	SHOW BARN	53	RUN 5		
38	D3	33B	RUN 1	108	SHOW BARN	52	RUN 5		
18 & A	D2	26	RUN 1	129	SHOW BARN	57A	RUN 5		
19 & A	D2	40B	RUN 1	131	SHOW BARN	57B	RUN 5		
78 & A	D2	32A	RUN 1	122	SHOW BARN	50	RUN 5		
67 & A	D2	32B	RUN 1	132	SHOW BARN	59	RUN 5		
68	D2	32C	RUN 1	134	SHOW BARN	60	RUN 5		
75	D2	69 & A	D7	136	SHOW BARN	61	RUN 5		
74	D2	76 & A	D7	148	SHOW BARN	63A	RUN 5		
79	D2	80	D7	106	SHOW BARN	63B	RUN 5		
89 & A	D2	81 & A	D7	138	SHOW BARN	65	RUN 5		
90 & A	D2	82 & A	D7	146	SHOW BARN	66	RUN 5		
70	TENT	83 & A	D7	141	SHOW BARN	207	RUN 5		
3	TENT	84 & A	D7	142	SHOW BARN	214	RUN 5		
20A 20AA	PREG	86 & A	D8	130	SHOW BARN	236	RUN 6		
21	PREG	87 & A	D8	140	SHOW BARN	237	RUN 6		
6	TENT	88 & A	D8	144	SHOW BARN	238	RUN 6		
6A	PREG	77	D8	143	SHOW BARN	24	RUN 6		
6B	PREG	91	D8	145	SHOW BARN	239	RUN 6		
7	TENT	92 & A	D8	149	SHOW BARN	240	RUN 6		
8A	ANNEX	93 & A	D8	124	SHOW BARN	241	RUN 6		
17	D1	72	D9	135	SHOW BARN	242	RUN 6		
17A	D1	73	D9	147	SHOW BARN	243	RUN 6		
17B	D1	202	D9	102	SHOW BARN	244	RUN 6		
22	D1	203	D9	109	SHOW BARN	245	RUN 6		
22B	D1			125	SHOW BARN	246	RUN 7		
22C	D1			128	SHOW BARN	247	RUN 7		
22D	D1					248	RUN 7		
23	D1					249	RUN 7		
201	D1					250	RUN 7		
204	D1					251	RUN 7		
44	ANNEX					252A	RUN 7		
49	ANNEX					252B	RUN 7		
42	ANNEX					253	RUN 7		
45	ANNEX								
46	ANNEX								
48	ANNEX								
43	ANNEX								

LOTS 301 & 301A
THRU
358 & 358A
SELL IN LOT ORDER
(PENS 9-16)

